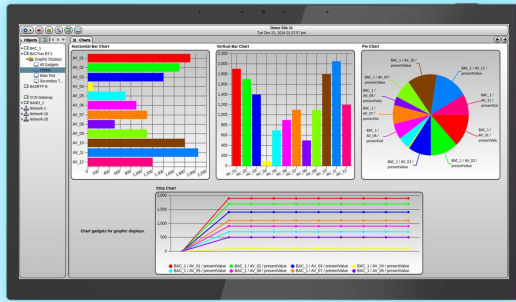




PRODUCT INFORMATION SHEET

Model No	WMS-TCP156-IW
Product Description	15.6" Android In-Wall Tablet

HRW Limited
 admin@hrw.hk www.hrw.hk



System	CPU	RK3566 Quad core cortex A55
	RAM	2GB Optional 4GB
	Internal memory	32GB Optional 64GB
	Operation system	Android 13
	Touch screen	10-Point capacitive touch
Display	Panel	15.6"high-definition full view screen fully bonded
	Resolution	1920*1080
	Display mode	Normally black
	Viewing angle	85/85/85/85(L/R/U/D)
	Contrast ratio	1000
	Luminance	300cd/m2
Network	WiFi	802.11a/b/g/n/ac/ax (WiFi 6E) ,802.15.4/Thread
	Buletooth	Bluetooth 5.3
	Matter Protocol	Supports the connection of Matter protocol devices
	Ethernet	100M/1000M ethernet
Interface	Type-C	USB2.0 supports OTG functionality
	Relay port	Control home devices that support Relay connections
	RS-232 Serial port	Communicating with RS232 devices
	IR port	Used for infrared remote control, with an external plug-in receiver, which can control the device
	I/O port	Input (output) ports between equipment and external devices
	RJ45	Ethernet interface (POE function standard IEEE802.3at,POE+,class 4, 25.5W)
Media play	Power jack	DC power input
	Video format	MPEG-1,MPEG-2,MPEG-4,H.265,H.264,VC-1,VP8,VP9, etc.
	Audio format	MP3/WMA/AAC etc.
Other	Photo	jpeg
	Microphone	Four microphones
	Speaker	2*2W BOX chamber horn
	LED light strip	RGB
	Temperature and humidity sensor	YES
	Camera	5MP from a conventional perspective
	Working temp	0--40degree
	Certificates	3C, FCC, CE, ROHS etc.
Language	Multi-language	
Accessories	Usage	Wall hanging (with accessories), placement (with base)
	Adapter	Adapter, 12V/2A
	User manual	yes

Drawing

