



HPE8884BN Network I/O Expansion Unit, BACnet MS/TP

FW4.02

28 point network point expansion unit for BACnet MS/TP networks. The large I/O count enables remote monitoring and control of numerous points at a similar location by one of more master controllers over the BACnet network.

Universal inputs may be locally scaled and tagged according to engineering units, calibrated and/or filtered to adjust for cabling or sensor characteristics. Digital inputs and UI's may be configured as pulse counters. Digital outputs may have short-cycle timers set.

Typical Applications

- Digital/analogue inputs such as alarms, operation statuses, high/low level, water & air flow proving, environmental conditions such as temperature, humidity or pressure, and other auxiliary contacts.
- Digital/analogue outputs for switching of fans, pumps, lighting or remote status indication, and modulating control of actuators, speed or load controllers and remote analogue gauges.
- Universal inputs and digital inputs may be used as counting inputs for metering of energy and volume and instantaneous load calculation at the Master controller

Feature Summary

- 8 Digital Inputs (DI n/o or n/c, flip/flop, pulse-counting up to 10Hz)
- 8 Digital Outputs (DO) with power-up presetting & short-cycle timers
- 8 Universal Inputs (UI - user configurable analogue [AI] or digital [DI n/o or n/c], flip/flop, pulse-counting up to 10Hz)
- 4 Analogue Outputs (AO) with power up presetting
- RJ11 connected room sensor options (UI1 & UI2 via screw terminals or RJ11 socket)
- UI's user definable for non-standard sensors, active or passive from 1kΩ
- Connected sensors may be calibrated and filtered by way of the UI configuration
- Isolated, 256 node (1/8th load), RS485 network driver
- Communication speeds from 2400 baud up to 76800 baud
- System-wide unique device addressing
- BACnet application services; Single-Read, Multiple-Read, Single-Write, Who Is, I Am, Who Has, I Have
- BACnet priority array
- LED indication of the On/Off status of DI and DO points for fast visual status verification
- Dynamic LED indication of AO status
- Sequential flashing of DI LED's as 'Watchdog'
- Automatic communication resumption after a power loss
- PC configuration by text file download using FUNCPROG or by direct parameter settings entry
- Upload text file data for retrieving lost application settings, for re-use in other controllers



OPERATION OVERVIEW	3
BACNET OBJECT INSTANCES	3
BACNET PRIORITY ARRAY	4
FUNCTION BLOCK OBJECTS & SUB-PARAMETERS	5
TERMINAL MODE	6
HYPERTERMINAL SETTINGS	6
<i>Additional Settings</i>	7
<i>Connecting at 76800 Baud Rate</i>	7
<i>Saving HyperTerminal Settings</i>	7
<i>Changing Baud Rate</i>	7
BREAK IN TO TERMINAL MODE	8
ADMINISTRATION COMMANDS	9
DISPLAY NAVIGATION	10
SUMMARY SCREEN SETTING	10
MANUAL OVERRIDE / RELEASE	10
OPERATIONAL DISPLAYS	11
USER SUMMARY SCREEN	11
DOWNLOAD TEXT FILE	12
‘MAIN’ PHYSICAL I/O DISPLAY	13
POINT LIST DISPLAY	13
RESET TO FACTORY DEFAULT	14
UPLOAD TEXT FILE	14
LINEARISATION TABLE	16
FACTORY DEFAULT SENSOR TYPES	16
ACTIVE SENSOR SCALINGS	16
PASSIVE SENSOR DEFINITION	17
RESET TO FACTORY DEFAULT	17
INSTALLATION & COMMISSIONING	18
CONNECTIONS	19
DIMENSIONS	20
TECHNICAL DATA	20
ORDERING INFORMATION	21
HPE8884BN	21
ACCESSORIES	21
OTHER HP_BN SERIES DEVICES	21
UI CONFIGURATION REQUEST FORM	22
DOCUMENT UPDATE HISTORY	23

Operation Overview

The inputs and outputs are numerically represented as a Function Block 'Object'. The object is a function block's output value. Depending on the purpose of a function block the object may have a range of sub-parameters available for defining the block's function and the operational features & limitations of the function.

In this document the term 'Objects' will mainly be used in the context of BACnet networks but will otherwise be referred to as a 'point' or 'points' when discussing specific control applications.

The process of setting up function blocks and connecting function blocks to form an application uses simple text lines therefore it is not necessary to learn a complex programming language. The settings may be manually typed in to the device or, using the **FUNCPROG 141101** programming tool which provides a visual representation of each block, an application text file may be created, saved and downloaded to the device as a complete group of settings. Earlier versions of FuncProg may be used but the latest feature settings will not be directly available in those earlier versions.

The ability to make single setting changes directly at the device makes for easy debugging and commissioning.

The function blocks comprise:

- Physical I/O for connection of input switches, sensors and output control devices
- Network settings

In all cases points may be manually overridden for testing & commissioning purposes or for service override. In respect of BACnet priority arrays manual overrides are Priority 9 (factory default = Null / internal program control = 16).

Connection to the device for programming and service is via a terminal program such as HyperTerminal (recommended). While on-line to the device it is possible to view point statuses and where applicable, any dependent or influencing point's connections. Statuses are updated live to the terminal screen every 10 seconds or manually refreshed any time by pressing the enter key.

In addition to the predefined point displays a user-defined display is available for a customised point summary related to an application. The user display may contain up to 32 lines of user text with or without dynamic points included.

BACnet Object Instances

A total of 28 function blocks exist in the device. Most objects may be Binary or Analogue, and may be seen as an Input, an Output or a Value.

- A physical digital input has a Binary Input (BI) instance by default but if configured as a pulse counter then its object instance would be Analogue Input (AI).
- A physical digital output is a BO (Binary Output) by default but if programmed for PWM control, which has a control value of 0...100%, then it is seen as an AV (Analogue Value).

Using DO1 as an example:

Description:	Physical digital output
Object #:	9
Object Instance when binary DO:	BO9 or BV9
Object Instance when PWM function:	AV9



The common reference in all cases is the object # therefore during device Object Discovery over the network the option of Input, Output or Value is decided based on the programmed application use of the object in question.

BACnet Priority Array

The BACnet protocol utilises a Priority Array for each object to enable various network devices to take control of a device's object based on the level of need. Priority 16 is the least significant level and may be considered normal 'Auto' operating level. Priority 1 is the highest control level, generally used for emergency control under fire condition or similar events.

In respect of this device:

- The objects are null priority by default
- Manual commands via terminal mode operate at priority level 9
- Release of a manual results in an object reverting to next lowest and still valid priority level
- Commands from the network to DO and AO are remembered after a power reset if priority 1...8

Function Block Objects & Sub-Parameters

The following is an overview of the function block features and options. For in-depth description of function choices and their use please also download or request the separate **FUNCPROG Application Tool** document.

Function Block	Object	Para #	Description	Selection Options
Digital Input 1...8	1...8	x00=	Input type	6 - Pulse counting, 7 - Digital, 14 - n/c, 15 - Toggle on/off
		x01=	Output OR	Object #
Digital Output 1...8	9...16	x02=	Output AND	Object #
		(x)x06=	Minimum ON time (sec)	0...255
		(x)x07=	Minimum OFF time (sec)	0...255
		(x)x08=	Maximum Run time (sec)	0...1000
		xx00=	Sensor type	0 - 100k NTC (-10...90°C) [Ctc] 1 - Ni1000 (-10...90°C) [Cni] 2 - 0-10Vdc (0...100%) [%V1] 3 - 4...20mA (0...100%) [%mA] 4 - PT1000 (-10...90°C) [Cpt] 5 - 10k NTC (-10...90°C) [Ctx] 6 - Pulse counter [P] 7 - Digital [D] 8 - % (0-100%) [%] 9 - Seconds [Sec] 14 - Digital normally-closed [DNC] 15 - Toggle on/off [D T]
Universal Input 1...8	17...24	xx01=	Input calibration - Offsets the measured value up to 10% of the sensor range	Any value within +/-10% of the sensor range
		xx02=	Filter incoming sensor measurement when the connected sensor is unstable	0 - Minimum (factory default) 1...9 - User setting where 9 represents the maximum filtering sample time For unstable sensors then a setting of 1 or 2 will typically be enough filtering to result in a stable measurement
		xx03=	Output OR*	Object #
		xx04=	Output AND*	Object #
Analogue Output 1...4	25...28			

* Digital 1 = 1000 (100%) when applied to these analogue logic functions. Analogue values will act as a Output Minimum when applied to an Output OR and Output Maximum when applied to an Output AND.

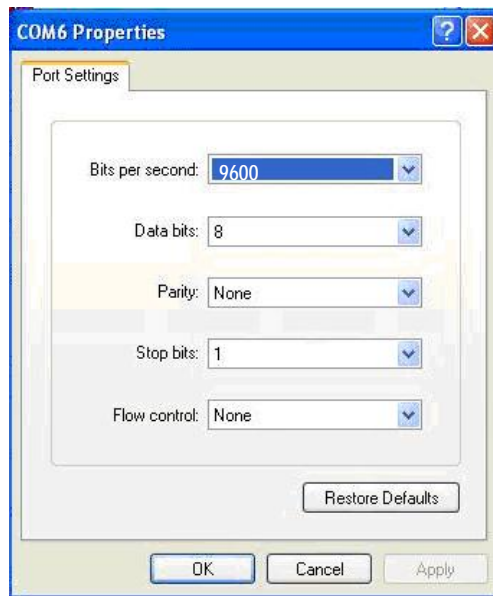
Terminal Mode

The HPECOM serial data cable is used for terminal mode between the device and a PC running a terminal program. HyperTerminal is recommended. A USB port <> Serial comm port (DB9) converter may be required if the PC being used does not include a Com 1 serial port.

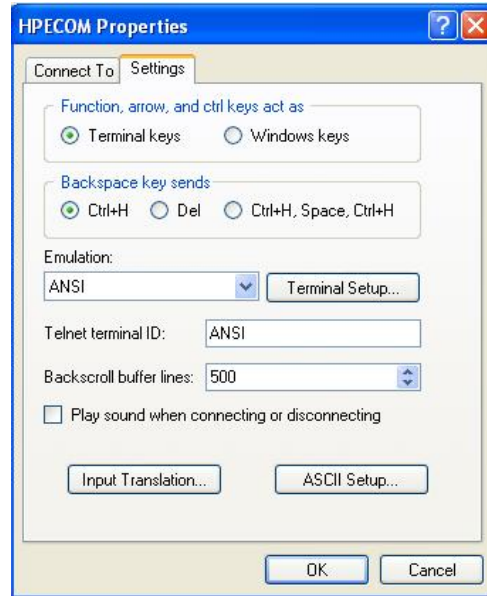
HyperTerminal Settings

For successful communication between HyperTerminal and the device, initial Properties setup of HyperTerminal should be as per the screen prints below.

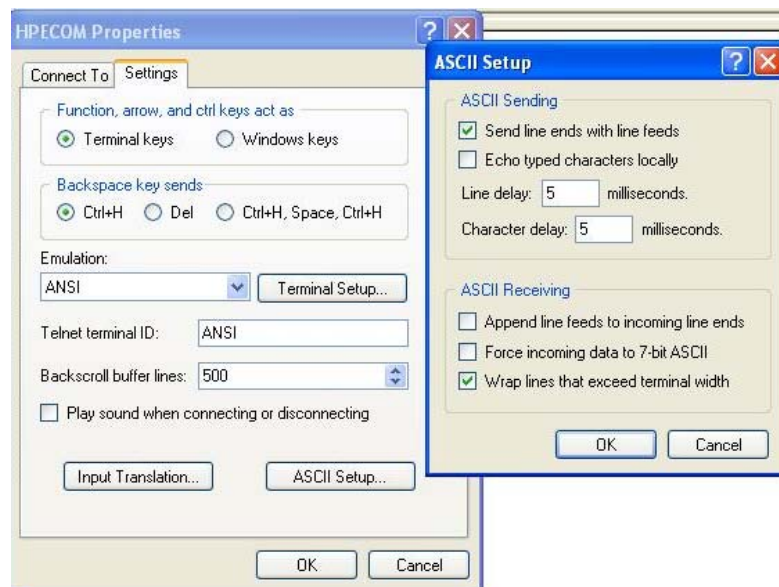
'Connect to' Comm Configuration:



'Settings' General:



'Settings' ASCII Setup:





Additional Settings

Some PC platforms may need keyboard response adjustment for initial Terminal Mode success. These settings may be done via the PC Control Panel >> Keyboard Settings:

- Fastest Repeat rate
- Shortest Delay time
- Fastest Cursor Blink rate

Connecting at 76800 Baud Rate

Because HyperTerminal does not support 76800 baud then after setting to 76800 the device baud rate will remain at 9600 baud for HyperTerminal communication and switch to 76800 after Writing the new baud rate and eXiting terminal mode.

To allow later terminal communication a device set with 76800 baud will operate at 9600 baud for the first 5 seconds after a power-up. If no attempt to connect the terminal at 9600 baud is made within 5 seconds of a power-up then the device will automatically switch to 76800 for normal network operation.

Saving HyperTerminal Settings

For ease of connection it is recommended to save the HyperTerminal setup for each baud rate you may wish to use with an easily recognised configuration name. For example:

- HPECOM 24 (2400)
- HPECOM 48 (4800)
- HPECOM 96 (9600)
- HPECOM 19.2 (19200)
- HPECOM 38.4 (38400)
- HPECOM 57.6 (57600)

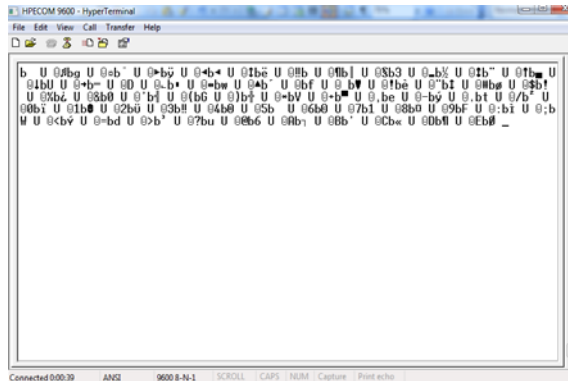
Changing Baud Rate

After changing to a new baud rate the controller will not start running at the new baud rate until the change has been Written (W). If setting a new baud rate via text file application download the new baud rate will be applied immediately the download is completed (auto-Write).

In either case, after the Write action, you will need to reconnect the terminal program at the new baud rate if you wish to continue the terminal session.

Break in to Terminal Mode

When HyperTerminal is running and the HPECOM cable is connected to the device the initial terminal screen will be receiving an ASCII character dump which is the BACnet transmission from the device. The ASCII dump will appear differently with different device address setting and if HyperTerminal baud rate is different to the baud rate set in the device. Below is an illustration of how the ASCII dump will look for a device at default settings; address 98 and 9600 baud.



To break in to terminal mode set Caps Lock on and hold the 'T' character key continuously (TTTTTTT...). After five (5) T's have been sent to the device it will switch to terminal mode. At this point the BACnet activity on the network will be halted and the device will display the default user screen.



Administration Commands

Function	Enter	Result	Options / Comments
Start communication	TTTTT(TTT...)	Display of configuration and I/O status	<i>With the Caps Lock on, hold the T key down until the screen updates with HPE data. It is not necessary to press the enter key to start communication.</i>
Download text file	DE	Make ready for file path	Menu: Transfer > Send textfile > file
Upload text file	UE	All settings are uploaded to the terminal for archive or re-use	<i>HyperTerminal: Start a Capture Text procedure before invoking UE then stop the Capture after Upload complete. Indigo you may simply copy the text on the terminal screen to a text file.</i>
Reset to Factory Default	FD=1	Reset to ex-factory settings	<i>FD will be displayed in the top line of the I/O summary screen after reset</i>
Set node address (MAC)	98=1...98, 100...127, 128...247	Network node number is assigned	<i>Example: 98=25 1...98 / 100...127 the device will be a 'token passing master' 128... 247 the device will become a network slave after power reset</i>
Set system Device Instance	DI=0...4194303	Unique Device Instance is assigned	<i>Example: DI=401025 (building 4, network 1, node 25)</i>
Set baud rate	99=...	Network comms speed is set	<i>2400, 4800, 9600, 19200, 38400, 57600, 76800 Example: 99=9600 After Writing new comm. speed it will be necessary to reconnect with Terminal at the new comm. speed to continue the terminal session!</i>
Set Maximum Master address	MM=1...127	Highest Master device address on the network is registered	<i>Next address searching limited to MM address</i>
Set Sys. Vendor ID (SysVid)	SV=0...255	System vendor specific features may be available	<i>SV=0 applies generic BACnet operation. If an entered ID is not implemented then the generic operation will be applied</i>
Zero the Reset counters	95=0, 96=0, 97=0	Each Reset counter is zeroed	<i>Factory diagnostics Resets = <95> <96> <97> Rx timeout, Tx timeout, Hardware reset</i>
Write values as default	W	Changes written.	<i>Always do this after making changes that you wish to be permanent</i>
Exit communication	X	Communication with HyperTerminal no longer active	<i>Auto X after 240sec without key entry. After eXit unplug the HPECOM cable to allow network communication to take place</i>

Display Navigation

Function	Enter	Result	Options / Comments
Display Control Commands	M	Display I/O summary screen	M
	P	Display Point status list	Enter P or P1 to display the first 21 Objects. Enter Pxx (where 'xx' is a point #) to display any other point and the following 20 points
	S	Return to User Summary display	S
	SS	Screen Static	Disable 10 sec live update
	SL	Screen Live	Enable 10 sec live update
	SLLD	Screen Line Logic Display	Enable/Disable display of object numbers and screen line numbers in the summary display

Summary Screen Setting

Function	Line	Method	Result	Options / Comments
Summary Display Lines & dynamic point setting	SL1...32	SL(x)x=abc...	Assign Screen Line text as information or in relation to SP1...32	Alpha/numeric, 40 characters max.
	SP1...32	SP(x)x=nnn	Assign Screen Point dynamic point value	Object #
	SLL1...32	SLL(x)x=nnn	Assign Screen Line Logic point who's value >0 will cause the related screen line to appear at the top of the display (alarm state for instance)	Object #

Manual Override / Release

Values that have been manually set will be indicted in HyperTerminal by an **M** tag next to the displayed value. The BACnet priority level = 9

Manually physical inputs (points 1...8 & 17...24) will revert to 'Auto' after being Released or after a power reset. Physical outputs will retain the Manual setting after a power reset if the Manual state is Written (**W**) before being released, thereby making the Manual state the power-up default state.

Function	Enter	Result	Options / Comments
Manual a Digital	Object #=1, 0	Digital on or off	1=On 0=Off <i>Example: 37=1</i>
Manual an Analogue	Object #=0...n	0...100% block output	Block range 0...max <i>Example: 25=50 (AO1 50% output / 5Vdc output)</i>
Release Manual overrides back to 'Auto' *	R R=1...112	Inputs will return to auto state/value. Other points will remain at manualled state/value until power reset or commanded	<i>Example 1: R</i> <i>All overrides are cleared</i> <i>Example 2: R=9</i> <i>DOI (point 9) only return to Auto</i>
Reset pulse accumulator	100...800=6 1700...2400=6	DI or UI with pulse accumulator config. (UI or DI setting 6) is reset to zero	<i>Example: 800=6</i>

Operational Displays

User Summary Screen

After breaking in to terminal mode the user defined point summary screen appears. This screen may be programmed by the user to provide a dynamic listing of point values specific to the application running in the device. Below is the factory default summary screen.

```
Point Summary
DI 1          OFF  D
UI 1          92.0 Ctc
DO 1          OFF  D
AO 1          0.0  %

Data above as example
All lines configurable
```

By entering **SLLD** (Screen Line Logic Display) the text line numbers, the point numbers relating to the dynamic points assigned to each line and any SLL (Screen Line Logic) links are displayed.

```
1 Point Summary
2
3 DI 1          1  OFF  D
4 UI 1          17 92.0 Ctc
5 DO 1          9  OFF  D
6 AO 1          25 0.0  %
7
8 Data above as example
9
10 All lines configurable
11
12 POINT 1 HIGH DISPLAYS ME AT THE TOP  SLL 1  OFF  D
13
14
15
16
17
18
19
20
21
22
23
24
```

On line 12 you can see a text entry that will not be seen when SLLD is off but will appear at the top of the screen when the point set for SLL12 is high, in this case point 1 (Digital Input 1). Enter SLLD again to revert to normal display mode. Below is the appearance of this hidden line when SLLD is off and DI1 is high.

```
POINT 1 HIGH DISPLAYS ME AT THE TOP
Point Summary
DI 1          ON M D
UI 1          92.0 Ctc
DO 1          OFF  D
AO 1          0.0  %

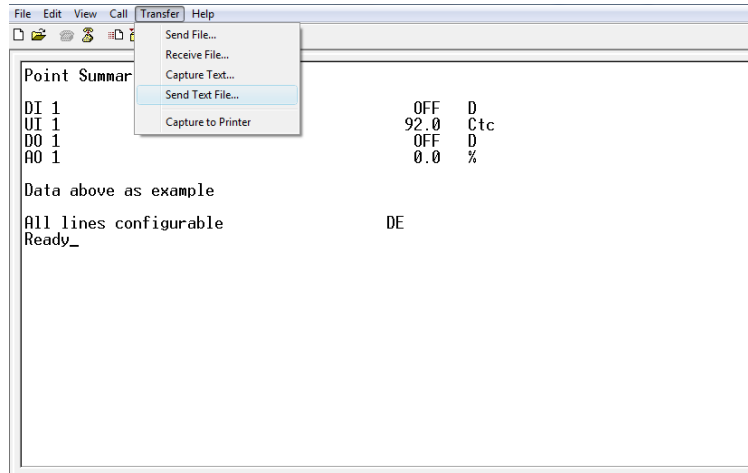
Data above as example
All lines configurable
```

You may use SLL settings for alarm or warning text that will only appear when the assigned point has a value >0.

Download Text File

Enter DE (Download Eprom) and you will see 'Ready' bottom-left of the screen. Now go to the Transfer menu item in HyperTerminal, select Send Text File, then open the path to the text file, created in the FuncProg tool, which you want to download.

The 'Ready' state is active for 20 seconds. If the text file location on your PC has a long path to find it the 'Ready' state may time out. It is recommend that you save the application text files in a folder on your PC Desktop to locate them in a time efficient manner.



After the text file has downloaded you will briefly see a check of the number of lines expected versus the number of lines received. If the two values are equal 'Restarting...' will be displayed at which point the new configuration is written to non-volatile memory automatically.

Below is an example showing a selection of utilised objects included in the summary screen with user object descriptions for easy identification of each objects' use

1				
2				
3	Room temperature	17	19.5	C
4				
5	Room humidity	18	59.1	rH
6				
7				
8	Heating stage 1	9	ON	
9	Heating stage 2	10	ON	
10	Heating stage 3	11	OFF	
11	Heating stage 4	12	OFF	
12				
13	DX stage 1	13	ON	
14	DX stage 2	14	ON	
15	DX stage 3	15	ON	
16	DX stage 4	16	ON	
17				
18	Fan proving	2	ON	
19	Compressor enable	3	ON	
20				
21	Local start/stop	1	ON	
22				
23				
24				

- Column 1 = Screen Line number (enter SLLD to toggle this column display on or off)
- Column 2 = User point description or general information text
- Column 3 = Point number of the displayed dynamic value (enter SLLD to toggle on or off)
- Column 4 = The dynamic point value
- Column 5 = Units related to the dynamic point value (as configured in the linearization table)

Main' Physical I/O Display

By entering **M** (Main) we can view the physical I/O summary status in the next illustration. In this example points 9 & 10 (DO1 & DO2) have Max. Run time of 1000 seconds set to reduce wear & tear of the 3-point actuator when open or closed command is at 100%; after 1000 seconds the output will electrically be switched off (logically still seen as ON) until the command value falls below 100% at which time the Max Run timer will reset. In practice it is recommended to set the Max Run timer at 2 x the actuator running time.

```

HPE8884BNV4.02                               Mon 1/1/2000 0:13
Resets = 0 0 8 98) 98 99) 9600 DI) 1098 MM) 127 SysVid) 0
17)UI1 = 21.0 Ctc 0          DI1 = OFF D
18)UI2 = 15.0 Ctc 990       DI2 = OFF D
19)UI3 = -10.0 Ctc 990      DI3 = OFF D
20)UI4 = -10.0 Ctc 990      DI4 = OFF D
21)UI5 = -10.0 Ctc 990      DI5 = OFF D
22)UI6 = -10.0 Ctc 990      DI6 = OFF D
23)UI7 = -10.0 Ctc 990      DI7 = OFF D
24)UI8 = -10.0 Ctc 990      DI8 = OFF D
25)A01 = 0.0 %              9)DO1 = 0.0 % 0 0 0 01000
26)A02 = 0.0 %              10)DO2 = 0.0 % 0 0 0 01000
27)A03 = 0.0 %              11)DO3 = 0.0 % 0 0 0 0 0
28)A04 = 0.0 %              12)DO4 = OFF D 0 10 10 0 0
13)DO5 = OFF D 0 10 10 0 0
14)DO6 = OFF D 0 10 10 0 0
15)DO7 = OFF D 0 10 10 0 0
16)DO8 = OFF D 0 10 10 0 0

Pt No = Value
X to exit
W to write values
-
  
```

Annotations in the image:

- Green arrow pointing to '01000' for DO1: Min. ON time
- Green arrow pointing to '01000' for DO2: Min. ON time
- Green arrow pointing to '0 0 0' for DO1: Time elapsed
- Green arrow pointing to '0 0 0' for DO2: Time elapsed
- Green arrow pointing to '0 0 0' for DO3: Min. OFF time
- Green arrow pointing to '0 10 10' for DO4: Min. OFF time
- Red arrow pointing to '01000' for DO1: Max. Run time
- Red arrow pointing to '01000' for DO2: Max. Run time

UI's display the linearized & scaled value (including calibration offset if any), the units as set in the linearization table and, to the right of the units, the 'raw count' as seen by the microprocessor prior to linearization and scaling being applied.

Point List Display

Enter **P** to display the first 21 active points. The listing will include any active logic connections and, in the case of the UI's the present calibration offset if used.

```

HPE8884BNV4.02                               Mon 1/1/2000 1:05
1 DI1 = OFF D
2 DI2 = OFF D
3 DI3 = OFF D
4 DI4 = OFF D
5 DI5 = OFF D
6 DI6 = OFF D
7 DI7 = OFF D
8 DI8 = OFF D
9 DO1 = 0.0 %
10 DO2 = 0.0 %
11 DO3 = 0.0 %
12 DO4 = OFF D
13 DO5 = OFF D
14 DO6 = OFF D
15 DO7 = OFF D
16 DO8 = OFF D
17 UI1 = 22.0 Ctc { 0.5 }
18 UI2 = -10.0 Ctc
19 UI3 = -10.0 Ctc
20 UI4 = -10.0 Ctc
21 UI5 = -10.0 Ctc
-
  
```

Enter P22 to display the remaining points.

```
... HPE8884BNV4.02                               Mon 1/1/2000 1:07
22 UI6 = -10.0 Ctc
23 UI7 = -10.0 Ctc
24 UI8 = -10.0 Ctc
25 A01 = 0.0 %
26 A02 = 0.0 %
27 A03 = 0.0 %
28 A04 = 0.0 %
```

Reset to Factory Default

If using a device that has previously been programmed it is recommended to reset the device to Factory Default before reprogramming to ensure any old settings that are unwanted in the new program do not have any influence on the new application.

To perform a Factory Default reset enter **FD=1**

A device set at Factory Default settings will have 'FD' displayed in the top line of the Main physical point summary screen [M]).

Note: If using devices with firmware less than version 4.00 then you must download the Factory Default text file to reset the device to Factory Default.

Upload Text File

In event that application files are lost it is possible to retrieve an application settings Text File from a device using the UE (Upload Eeprom) command.

After entering UE the current settings in the device will be printed on to the terminal screen. With HyperTerminal it is possible to Capture this upload:

- 1) Start a Capture Text from the Transfer menu of HyperTerminal
- 2) Enter UE
- 3) After the print of all settings has completed then stop the Capture
- 4) Locate the text file which was created during the Capture process
- 5) Clean up the file by deleting any lines that are not relevant setting lines
- 6) Count the number of lines (paste in to Excel cell A1 is a fast way to check the line count)
- 7) Add one more line at the bottom of the file with content 10000=nnn
 - a. nnn value is the number of lines previously counted + 1
 - b. Ensure there is one line return after the 10000=nnn line

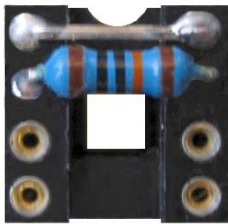
This text file is now ready for saving as a backup or for Down Load to other devices.

Other terminal programs may have other processes for saving the uploaded text. In some cases it may simply be a case of copying the relevant lines of the screen and pasting in to Notepad. Whatever the process, the 10000=nnn line must be added if the file is to be used for Down Load in future.

Universal Inputs

UI's feature input resistor raft (hardware) and linearization table curves (software) for definition of a wide range of sensor types so is useful for retrofit activities allowing existing sensors to be reused. The linearization tables in the device may be customised and UI raft resistor values altered to suit other sensors as required.

Ready-made UI rafts to suit factory default linearization table selections are available. In absence of instruction at time of ordering (refer order form on page 25) the factory default UI raft is fitted with 0Ω (short-circuit) in position 1 and 10kΩ in position 2; configuration as **Digital/pulse Input or 10k NTC** thermistor temperature sensor. Assignment of the input as DI, pulse counter or NTC thermistor is made by setting the relevant linearization table 'Sensor Type' for the input.



1. Gain Resistor
2. Biasing Resistor
- 3 Voltage Divider
4. Dropping Resistor

UI raft configurations are made according to the table below and by PC assignment of the relevant Sensor Type. **Factory default Sensor Type selections are highlighted.**

When making own raft configurations select ¼ Watt resistors of 1% tolerance or better.

Input Type	Sensor	Range	Unit	Slope	Intercept	Type	UI Resistance Raft (Ω)			
							1	2	3	4
DI		On/Off		1	0	BV	0	100k	Open	Open
Counting		0-65536	1	1	0	AV	0	100k	Open	Open
AI	0-5Vdc	0-100	%	1	0	AI, AV	0	Open	Open	4k7*
AI	0-10Vdc	0-100	%	1	0	AI, AV	0	Open	100k	4k7*
AI	0-20Vdc	0-100	%	1	0	AI, AV	0	Open	33k	4k7*
AI	4...20mA	0-100	%	1	0	AI, AV	0	Open	Open	250
AI	100k NTC	-10...90	°C	1	-10	AI, AV	0	100k	Open	Open
AI	20k NTC	-10...90	°C	1	-10	AI, AV	0	20k	Open	Open
AI	10k NTC	-10...90	°C	1	-10	AI, AV	0	10k	Open	Open
AI	8k NTC	-10...90	°C	1	-10	AI, AV	0	8k	Open	Open
AI	3k NTC	-10...90	°C	1	-10	AI, AV	0	3k	Open	Open
AI	PT1000	-10...90	°C	1	-10	AI, AV	820k	1.1k	Open	Open
AI	Ni-1000	-10...90	°C	1	-10	AI, AV	360k	1.2k	Open	Open
AI	Ni-1000	-50...50	°C	1	-50	AI, AV	360k	1k	Open	Open
AI	Ni-1000	50...150	°C	1	50	AI, AV	360k	1.5k	Open	Open

* Measurement with some lower impedance voltage-based sensors may top out before the full voltage range is reached, requiring omission of the 4k7 resistor.

Linearisation Table

The Linearisation Table provides conversion of the UI physical signal in to an engineering value for display and control in other areas of an application. Sensor Types 0...5 may be customised to suit different scaling for a specific active sensor type or to suit a passive sensor element that is not already pre-programmed as a factory default.

Factory Default Sensor Types

UI Sensor Type	Sensor	Units Tag	Scale
0	100k NTC (B25/50: 4200) 10k NTC type 2 (B25/50: 3935)	Ctc	-10...90 °C
1	Nickel 1000 (PTC)	Cni	-10...90 °C
2	0-10Vdc (0...20mA)	%V1	0...100%
3	4...20mA (2-10Vdc)	%mA	0...100%
4	PT1000 (PTC, EN60751)	Cpt	-10...90 °C
5	10k NTC type 3 (B25/50: 3630)	Ctx	-10...90 °C

Enter <L> to display the default linearization table.

1		C	C	%	%	C	C	Units character1
2		t	n	V	m	t	t	Units character2
3		c	i	1	A	t	x	Units character3
4	0	852	243	0	200	173	819	
5	150	723	319	150	320	306	695	
6	300	554	393	300	440	436	546	
7	450	385	465	450	560	555	399	
8	600	249	535	600	680	669	277	
9	750	154	604	750	800	777	188	
10	900	95	671	900	920	879	124	
11	1024	59	723	1007	1007	950	89	
12		-100	-100	0	0	-100	-100	Intercept
13		-1	-1	-1	-1	-1	-1	Decimal shift (-2...2)
14		1	1	1	1	1	1	Multiplier (1...9)

Column 1 (Reference)
Column 2 (UI Sensor Type 0)
Column 3
Column 4
Column 5
Column 6
Column 7 (UI Sensor Type 5)

Active Sensor Scalings

Column 1 is the fixed reference to which all display results are based. The range of the reference column 1 is effectively 0...1000. It is important to interpret the reference values in combination with the intercept and scaling data at rows 12...14. Taking Sensor Type 2, 0-10Vdc, as an example:

- The microprocessor raw count range of 0...1000 relating to 0-10Vdc results in 0...100% display because the reference column values are being decimal shifted one place to the left (row 13 column 4 = -1)
- If 0-10Vdc is to be displayed directly as 0-10Vdc then we need to decimal shift -2 at row 13 column 4 and change Units display characters
 - 13=-2
 - 14=V (row 1 column 4)
 - 24=d (row 2 column 4)
 - 34=c (row 3 column 4)

- If 0-10Vdc is to be displayed as 0...50°C then decimal shift the display reference range -2 at row 13 column 4, multiply it by 5 at row 14 column 4 and change units characters (remove surplus characters by entering a <space>)
134=-2
144=5
14=C (row 1 column 4)
24=<space> (row 2 column 4)
34=<space> (row 3 column 4)
- If a second 0-10Vdc sensor with different scaling is needed, say, 0...2000 PPM, then copy default 0-10Vdc raw count data to a column who's existing sensor data will not be used in future. The following settings assume overwrite of the Ni1000 column 3 (Sensor Type 1)
13=P
23=P
33=M
43=0
53=150
63=300
73=450
83=600
93=750
103=900
113=1007
123=0
133=0
143=2

In the last example the display reference column range is unchanged, 0...1000, until the multiplier at row 14 is applied (x2) resulting in a final scale for PPM of 0...2000.

Note: The value at the intercept row, 12, will have the decimal shift (row 13) and multiplier (row 14) applied to it. Therefore, if intercept -10.0 is required and decimal shift will be -1 (x0.1) then enter -100 in row 12 as the final result after processing with the decimal shift will be an intercept of -10.0

Using the FUNCPRG tool these settings can be generated in table form for saving as a download text file.

Passive Sensor Definition

Non factory default passive sensors with thermistor element of 1kΩ or greater may be configured

1. Set up a UI raft with suitable resistance links fitted and plug it in to the raft socket of the UI being used. If the sensor was 8kΩ at 25°C then 8kΩ would be fitted in link 2 of the UI raft
2. Consult the manufacturers resistance chart for the sensor being used and connect resistance equivalent to the reference values in Column 1 (note that in the reference column 1 the reference value 150 is considered as 15°C once the decimal shift of -1 is applied at row 13)
3. Assign an otherwise unused Sensor Type to the test UI
4. In the Main I/O display read and record the raw count value, as displayed to the right of the units for the UI to which the test resistance is connected
5. Enter the raw count in the table at the corresponding reference value row and column;
<row#><column#>=<raw count>
6. Complete the raw count entry for all reference points
7. If an intercept other than zero (0) is applied then raw count measurements must be at reference values shifted an equivalent amount

Reset to Factory Default

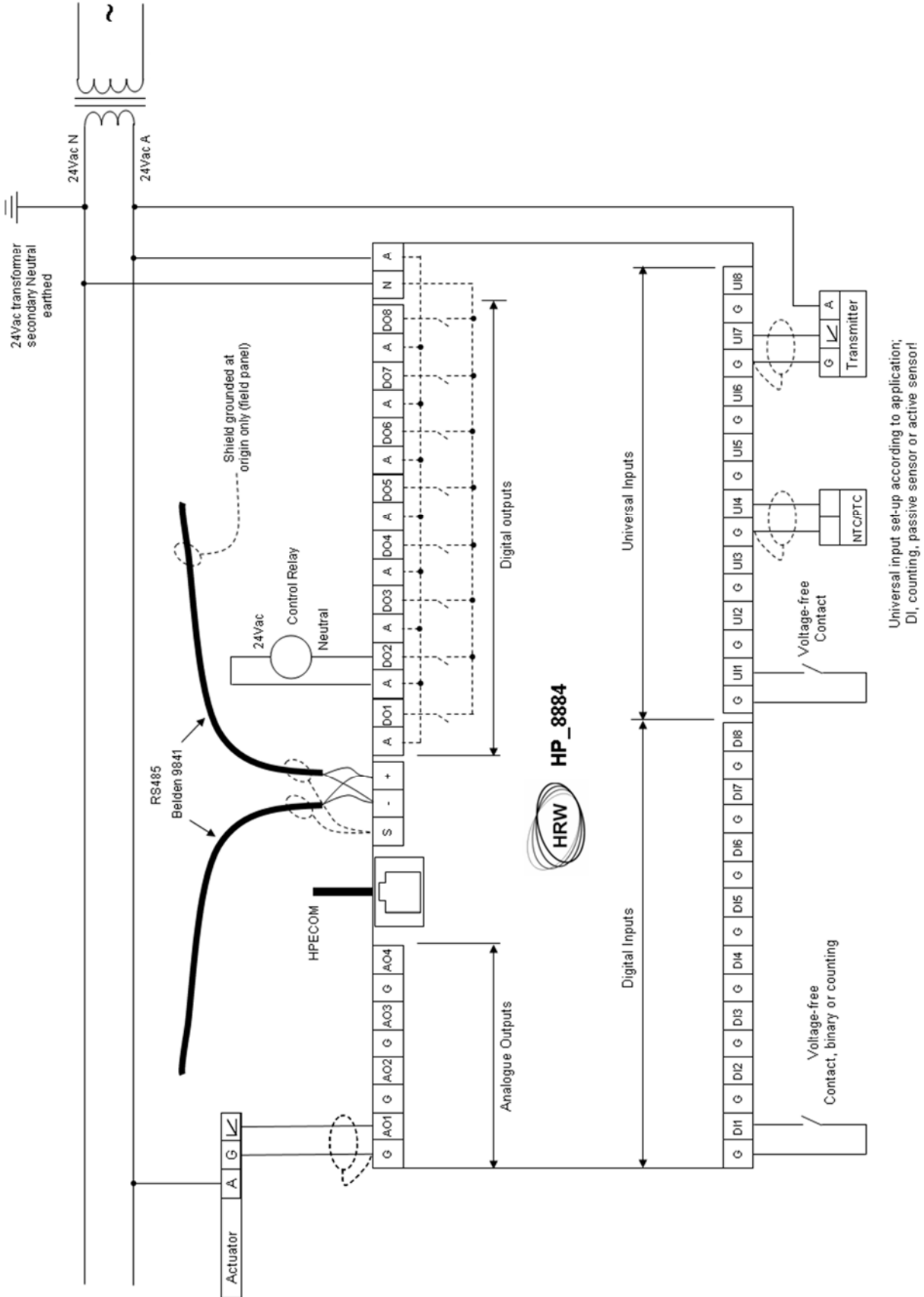
The **FD=1** reset command also resets changes to the linearization tables



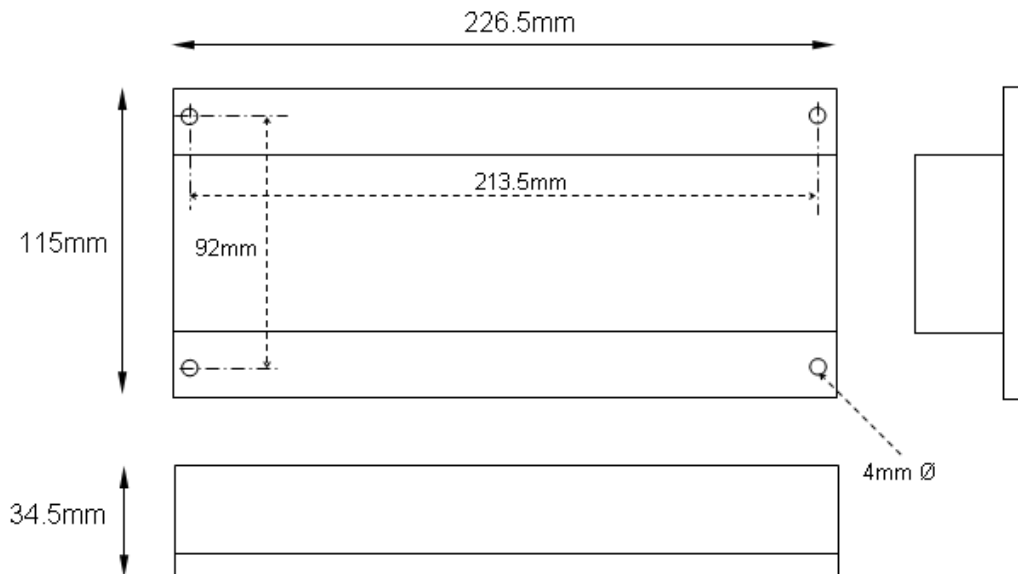
Installation & Commissioning

- This is an RS485 network device designed for indoor mounting in a dry electrical panel. Ideally it should be mounted to the panel backplane in a horizontal position (inputs on the lower side and outputs on the upper side)
- Each 24Vac power supply transformer should have the neutral (24Vac N) connection grounded at the electrical panel earth connection to ensure the device grounding is at the same potential as the network master's grounding
- Where more than one device is connected to a common transformer ensure that the 24Vac phasing is the same to each device ('A' connects to 'A', 'N' connects to 'N' in all cases)
- If the red comms light adjacent to the RS485 terminals emits an obvious flash every time 24Vac power is applied to the device then the micro-processor may be corrupted. The microprocessor should be replaced
- Twisted pair shielded cable must be used for the sensors and transmitters connected to the universal inputs (UI's). The sensor cable shield must be grounded, at the device end only
- RS485 multi-drop cable should be used for the network connections, complete with end of line terminating resistors (120Ω). Belden 9841 or equivalent is recommended. The recommended cable is a low capacitance twisted pair with braid and foil screen
- The RS485 cables should be terminated directly at each device in a daisy-chain configuration, avoiding 'laterals' or 'spurs'
- The RS485 screen should be connected at the network master's ground terminal. The incoming and outgoing screen at each device should be continuously connected via the S terminal of the device (note that the device's S terminal has no electrical connection to the device, it merely acts as a junction terminal for the purpose of screen continuity)
- The RS485 cable should avoid cable routes that run with power cables. Where the RS485 cable must cross power cables then they should cross at 90° avoiding parallel runs beside power cables
- Prior to connection of the slave devices to the RS485 network check that no AC voltage is present. Double check the network for short circuits between the twisted pair cores and between the cores and the screen. Ensure continuity of the twisted pair cores and the screen
- Check the network master's +/- terminals for correct voltages to ground (approx. 2.5Vdc) and connect the RS485 network cable to the network master's RS485 port
- At each device assign an individual address and the baud rate specific to the network. Write the changes, eXit the terminal application and remove the HPECOM cable
- Verify network voltage at the RS485 connector (between +/- and ground) and connect to the device. Communication can be verified by flashing of the red comms LED adjacent the 3 terminal RS485 connector). Frequency of comms LED flash is baud rate dependant. At higher baud rates the LED flash may not be obvious, the LED appearing to be continuously on
- Where a network runs between buildings and zero earth potential difference between individual panel 24Vac power supplies cannot be guaranteed, we recommend that a repeater be used to provide isolation of the sections of the network having differing earth potential

Connections



Dimensions



If using HDA0002 DIN rail adapter brackets the overall depth from the gear plate to the front surface of the device is 45.5mm

Technical Data

Inputs/Outputs

- 8 DI - Voltage-free contact closure, 1mA
- Binary DI or pulse counting up to 10Hz (pulse value saved hourly)
- 8 DO - 24Vac, 3A in-rush, 300mA holding max., minimum load 10mA
- 8 UI - DI with pulse counting up to 10 Hz (pulse value saved hourly)
- NTC/PTC (min. 1k Ω)
- 0-5Vdc, 0-10Vdc, 0-20Vdc, 0.01 Volt resolution
- 0...20Ma, 4...20mA, 0.016mA resolution (requires external 18...28Vdc loop power supply)
- 4 AO - 0-10Vdc, 0.04 Volt resolution, 1.5mA (min 6.6k Ω impedance)

Sensor/Transmitter Wiring Network Wiring

Shielded twisted pair (shield grounded)
Belden 9841 low capacitance twisted pair for RS485 networks (braided + foil shield, shield continuous throughout the network and grounded at network origin)

Comms Speed RS485 Driver Power Supply

RS485 - 2400, 4800, 9600, 19200, 38400, 57600, 76800 baud
Isolated 1/8th load, 256 nodes over max. 1.2km without repeater
24Vac, 50/60 Hz, max. 5VA without DO load
60VA MAX. when DO's supplied via the device's 24Vac terminals and fully loaded @ max. 300mA / DO

Conformity & Approvals

BTL Listing 23710
UL 916
CAN/CSA C22.2 #205-M1983
FCC Part 15 Subpart B Class B
EN 55022, EN 55024, EN 61000-3-2, EN 61000-3-3

Operating Temperature Range

0...50°C (32...122°F)

Storage Temperature Range

-5...75°C (-40...167°F)

Humidity Range

10...95%rH (non-condensing)

Dimensions

115mm H x 226.5mm L x 34.5mm D



Ordering Information

HPE8884BN

Description: I/O Expansion unit, 28 Point, BACnet MS/TP, 24Vac
 Standard package: 20 units per carton

Any mix of the following UI configuration rafts are available for free of charge pre-assembly at the time of ordering the controller. If required after controller delivery they may be purchased in packs of 50 pieces of one type (other types by request):

HPE-RA010	HP_8884 UI raft, Active 0(2)-10Vdc
HPE-RA420	HP_8884 UI raft, Active (0)4...20mA
HPE-RC1090	HP_8884 UI raft, Passive 100k NTC -10...90°C / Digital
HPE-RN1090	HP_8884 UI raft, Passive Ni1000 -10...90°C
HPE-RP1090	HP_8884 UI raft, Passive PT1000 -10...90°C
HPE-RS1090	HP_8884 UI raft, Passive 20k NTC -10...90°C / Digital
HPE-RX1090	HP_8884 UI raft, Passive 10k NTC -10...90°C / Digital (factory default)

Accessories

HDA0002	DIN rail adapter brackets, factory fitted
HSD0011	10k NTC Room temperature sensor, c/w discrete occupancy button (press sensor face), RJ11 connected to UI1 & UI2
HSD0012	10k NTC Room temperature sensor, c/w set point dial and discrete occupancy button (press set point dial), RJ11 connected to UI1 & UI2
HPR6	Relays module, 6 x Opto-iso SPDT 250Vac 10(7)A n/o 6A n/c, ac/dc trigger, Auto/Off/Manual switch, 24Vac
FUNCPROG	Application creation tool
HPECOMU	Configuration cable (USB <> RJ11)

Other HP_BN Series Devices

HPC0662BN	Universal Controller, 12 Point, BACnet MS/TP, 24Vac
HPC8884BN	Universal Controller, 28 Point, BACnet MS/TP, 24Vac
HPD0440BNMR	Network HMI / Universal Ctrl / Scheduler / Modbus RTU gateway 8 Point, BACnet MS/TP, 24Vac
HPD0460BN	Network HMI, 12 Point, BACnet MS/TP, 24Vac
HPD0460BNC	Network HMI / Universal Controller, 10 Point, BACnet MS/TP, 24Vac
HPD0460BNCT	Network HMI / Universal Ctrl / Scheduler, 10 Point, BACnet MS/TP, 24Vac
HPD0460BNT	Network HMI / Scheduler, 10 Point, BACnet MS/TP, 24Vac
HPV0662BN	VAV / Universal Controller, 13 Point, BACnet MS/TP, 24Vac
HPE-BNMBUS	BACnet gateway for M-Bus devices, 250 point, 24Vac
HPE-BNMOD	BACnet gateway for Modbus devices, 250 point, 24Vac
HPE-BNMR10	BACnet gateway for 1 Modbus device, 10(20) point, 24Vac



BTL is a registered trademark of BTL. BTL does not endorse, sponsor or guarantee any product for compliance with BTL standards. Compliance of listed products to requirements of BTL is the responsibility of the product manufacturer. BTL is a registered trademark of BTL Testing Laboratory.



UI Configuration Request Form

Date: _____

Contact Name: _____

Phone: _____

Fax: _____

Email: _____

Company Name: _____

Address: _____

HPC8884BN Quantity: _____

Universal Input Configuration: Indicate an input configuration type for each UI

	UI1	UI2	UI3	UI4	UI5	UI6	UI7	UI8
0-10Vdc								
4...20mA								
10k NTC / Dig								
20k NTC / Dig								
100k NTC / Dig								
Nickel 1000								
PT1000								

Other: Passive types must be 1kΩ or higher

Comments:



Document Update History

V4.02 150622	HRW address updated
V4.02 141030	Upload application text-file, download network settings in text-file, isolated RS485