



HPE8884P1 Network I/O Expansion, P1 FLN

FW4.02

28 point network point expansion unit for P1 FLN networks. The large I/O count enables remote monitoring and control of numerous points over the P1 network.

Universal inputs may be locally scaled and tagged according to engineering units, calibrated and/or filtered to adjust for cabling or sensor characteristics. Digital inputs and UI's may be configured as pulse counters. Digital outputs may have short-cycle timers set.

Typical Applications

- Digital/analogue inputs such as alarms, operation statuses, high/low level, water & air flow proving, environmental conditions such as temperature, humidity or pressure, and other auxiliary contacts.
- Digital/analogue outputs for switching of fans, pumps, lighting or remote status indication, and modulating control of actuators, speed or load controllers and remote analogue gauges.
- Universal inputs and digital inputs may be used as counting inputs for metering of energy and volume and instantaneous load calculation at the Master controller

Feature Summary

- 8 Digital Inputs (DI n/o or n/c, flip/flop, pulse-counting up to 10Hz)
- 8 Digital Outputs (DO) with power-up presetting & short-cycle timers
- 8 Universal Inputs (UI - user configurable analogue [AI] or digital [DI n/o or n/c], flip/flop, pulse-counting up to 10Hz)
- 4 Analogue Outputs (AO) with power up presetting
- RJ11 socket connection of HSD0012 or HSD0011 room sensors to UI1 & UI2 (room sensor with set point adjuster option, occupancy button & HPECOM port)
- UI's user definable for non-standard sensors, active or passive from 1k Ω
- Connected sensors may be calibrated and filtered by way of the UI configuration
- Isolated, 256 node (1/8th load), RS485 network driver
- Communication speeds from 2400 baud up to 76800 baud
- LED indication of the On/Off status of DI and DO points for fast visual status verification
- Dynamic LED indication of AO status
- Sequential flashing of DI LED's as 'Watchdog'
- Automatic communication resumption after a power loss
- PC configuration by text file download using FUNCPRG or by direct parameter settings entry
- Upload text file data for retrieving lost application settings, for re-use in other controllers



| | |
|---|-----------|
| OPERATION OVERVIEW | 3 |
| APPLICATION NUMBER 161 | 4 |
| POINT TYPES | 4 |
| FUNCTION BLOCK POINTS & SUB-PARAMETERS | 5 |
| TERMINAL MODE | 6 |
| HYPERTERMINAL SETTINGS..... | 6 |
| <i>Additional Settings</i> | 7 |
| <i>Connecting at 76800 Baud Rate</i> | 7 |
| <i>Saving HyperTerminal Settings</i> | 7 |
| <i>Changing Baud Rate</i> | 7 |
| BREAK IN TO TERMINAL MODE..... | 8 |
| ADMINISTRATION COMMANDS..... | 9 |
| DISPLAY NAVIGATION | 9 |
| SUMMARY SCREEN SETTING | 10 |
| MANUAL OVERRIDE / RELEASE..... | 10 |
| OPERATIONAL DISPLAYS | 11 |
| USER SUMMARY SCREEN | 11 |
| DOWNLOAD TEXT FILE | 12 |
| ‘MAIN’ PHYSICAL I/O DISPLAY | 13 |
| POINT LIST DISPLAY | 13 |
| RESET TO FACTORY DEFAULT | 14 |
| UPLOAD TEXT FILE..... | 14 |
| UNIVERSAL INPUTS..... | 15 |
| LINEARISATION TABLE..... | 16 |
| FACTORY DEFAULT SENSOR TYPES | 16 |
| ACTIVE SENSOR SCALINGS | 16 |
| PASSIVE SENSOR DEFINITION..... | 17 |
| RESET TO FACTORY DEFAULT..... | 17 |
| INSTALLATION & COMMISSIONING | 18 |
| CONNECTIONS..... | 19 |
| DIMENSIONS | 20 |
| TECHNICAL DATA | 20 |
| ORDERING INFORMATION | 21 |
| HPE8884P1 | 21 |
| ACCESSORIES | 21 |
| OTHER HP_P1 SERIES DEVICES..... | 21 |
| UI CONFIGURATION REQUEST FORM | 22 |
| DOCUMENT UPDATE HISTORY | 23 |



Operation Overview

The inputs and outputs are numerically represented as a Function Block 'point'. The point is a function block's output value. Depending on the purpose of a function block the point may have a range of sub-parameters available for defining the block's function and the operational features & limitations of the function.

The process of setting up function blocks and connecting function blocks to form an application uses simple text lines therefore it is not necessary to learn a complex programming language. The settings may be manually typed in to the device or, using the **FUNCPROG 141101** programming tool which provides a visual representation of each block, an application text file may be created, saved and downloaded to the device as a complete group of settings. Earlier versions of FuncProg may be used but the latest feature settings will not be directly available in those earlier versions.

The ability to make single setting changes directly at the device makes for easy debugging and commissioning.

The function blocks comprise:

- Physical I/O for connection of input switches, sensors and output control devices
- Network settings

In all cases points may be manually overridden for testing & commissioning purposes or for service override.

Connection to the device for programming and service is via a terminal program such as HyperTerminal (recommended). While on-line to the device it is possible to view point statuses and where applicable, any dependent or influencing point's connections. Statuses are updated live to the terminal screen every 10 seconds or manually refreshed any time by pressing the enter key.

In addition to the predefined point displays a user-defined display is available for a customised point summary related to an application. The user display may contain up to 32 lines of user text with or without dynamic points included.



Application Number 161

The default application number is 161. If necessary it is possible to change the application number while in terminal mode with the command `AN=nnnnn`

Point Types

A total of 28 function blocks exist in the device. Many points may be Digital or Analogue, therefore it is necessary to consider the programmed use of an input or an output before deciding it's point type.

Example, DI1

| | |
|--------------------------|------------------------|
| Description: | Physical digital input |
| Point #: | 1 |
| Type when on/off DI: | LDI |
| Type when Pulse counter: | LAI |



Function Block Points & Sub-Parameters

The following is an overview of the function block features and options. For in-depth description of function choices and their use please also download or request the separate **FUNCPROG Application Tool** document.

| Function Block | Point | Para # | Description | Selection Options |
|-----------------------|---------|---------|--|--|
| Digital Input 1...8 | 1...8 | x00= | Input type | 6 - Pulse counting, 7 - Digital, 14 - n/c, 15 - Toggle on/off |
| | | x01= | Output OR | Point # |
| Digital Output 1...8 | 9...16 | x02= | Output AND | Point # |
| | | (x)x06= | Minimum ON time (sec) | 0...255 |
| | | (x)x07= | Minimum OFF time (sec) | 0...255 |
| | | (x)x08= | Maximum Run time (sec) | 0...1000 |
| | | (x)x09= | Remember last state at power return | 0 - Disable, 1 Enable |
| | | | | |
| Universal Input 1...8 | 17...24 | xx00= | Sensor type | |
| | | xx01= | Input calibration - Offsets the measured value up to 10% of the sensor range | Any value within 10% of the sensor range |
| | | xx02= | Filter incoming sensor measurement when the connected sensor is unstable | 0 - Minimum (factory default) 1...9 - User setting where 9 represents the maximum filtering sample time For unstable sensors then a setting of 1 or 2 will typically be enough filtering to result in a stable measurement |
| | | xx03= | Output OR* | Point # |
| | | xx04= | Output AND* | Point # |
| Analogue Output 1...4 | 25...28 | | | |

* Digital 1 = 1000 (100%) when applied to these analogue logic functions. Analogue values will act as a Output Minimum when applied to an Output OR and Output Maximum when applied to an Output AND.

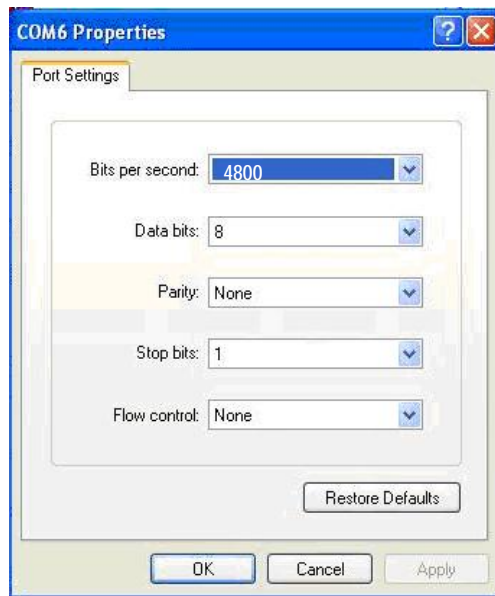
Terminal Mode

The HPECOMU data cable with USB connection is used for terminal mode between the device and a PC running a terminal program. HyperTerminal is recommended. The driver for the HPECOMU cable may be downloaded from www.hrw.hk, Resources / Tools, section.

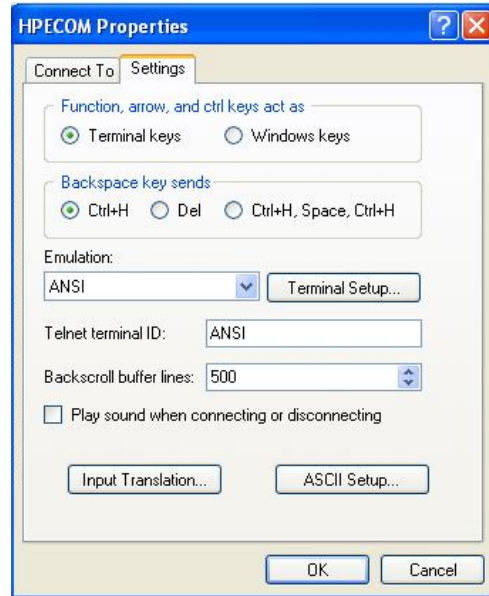
HyperTerminal Settings

For successful communication between HyperTerminal and the device, initial Properties setup of HyperTerminal should be as per the screen prints below.

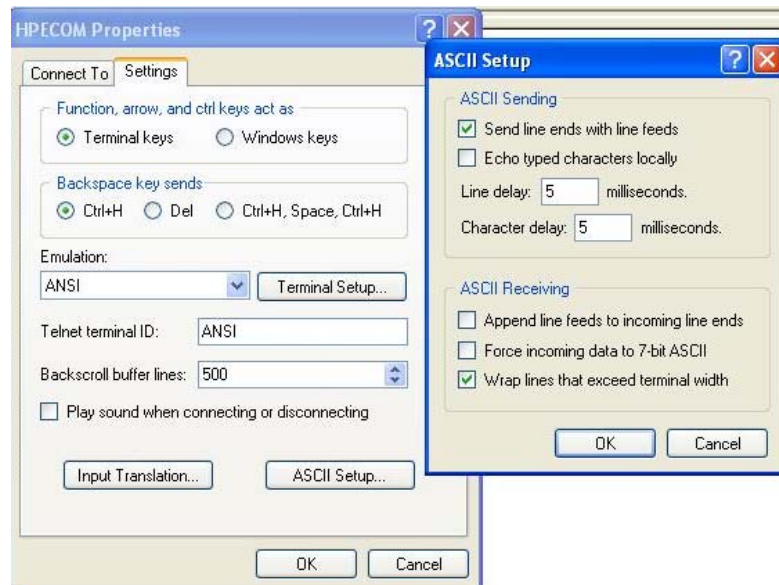
'Connect to' Comm Configuration:



'Settings' General:



'Settings' ASCII Setup:





Additional Settings

Some PC platforms may need keyboard response adjustment for initial Terminal Mode success. These settings may be done via the PC Control Panel >> Keyboard Settings:

- Fastest Repeat rate
- Shortest Delay time
- Fastest Cursor Blink rate

Connecting at 76800 Baud Rate

Because HyperTerminal does not support 76800 baud then after setting to 76800 the device baud rate will remain at 9600 baud for HyperTerminal communication and switch to 76800 after Writing the new baud rate and eXiting terminal mode.

To allow later terminal communication a device set with 76800 baud will operate at 9600 baud for the first 5 seconds after a power-up. If no attempt to connect the terminal at 9600 baud is made within 5 seconds of a power-up then the device will automatically switch to 76800 for normal network operation.

Saving HyperTerminal Settings

For ease of connection it is recommended to save the HyperTerminal setup for each baud rate you may wish to use with an easily recognised configuration name. For example:

- HPECOM 24 (2400)
- HPECOM 48 (4800)
- HPECOM 96 (9600)
- HPECOM 19.2 (19200)
- HPECOM 38.4 (38400)
- HPECOM 57.6 (57600)

Changing Baud Rate

After changing to a new baud rate the controller will not start running at the new baud rate until the change has been Written (W). If setting a new baud rate via text file application download the new baud rate will be applied immediately the download is completed (auto-Write).

In either case, after the Write action, you will need to reconnect the terminal program at the new baud rate if you wish to continue the terminal session.



Break in to Terminal Mode

When HyperTerminal is running and the HPECOM cable is connected to the powered device the initial terminal screen will be blank. If the device power is reset "Hello" will appear on the screen. If Hello does not appear on the screen after a power reset then it is likely that the HyperTerminal baud rate setting is incorrect.



To break in to terminal mode set Caps Lock on and hold the 'T' character key continuously (TTTTTTT...). After five (5) T's have been sent to the device it will switch to terminal mode. At this point the device will display the default user screen.



Administration Commands

| Function | Enter | Result | Options / Comments |
|----------------------------|------------------|---|---|
| Start communication | TTTTT(TTT...) | Display of configuration and I/O status | <i>With the Caps Lock on, hold the T key down until the screen updates with HPE data. It is not necessary to press the enter key to start communication.</i> |
| Download textfile | DE | Make ready for file path | Menu: Transfer > Send textfile > file |
| Upload text file | UE | All settings are uploaded to the terminal for archive or re-use | <i>HyperTerminal: Start a Capture Text procedure before invoking UE then stop the Capture after Upload complete. Indigo you may simply copy the text on the terminal screen to a text file.</i> |
| Reset to Factory Default | FD=1 | Reset to ex-factory settings | <i>FD will be displayed in the top line of the I/O summary screen after reset</i> |
| Set node address | 98=1...32 | Network node number is assigned | <i>Example: 98=25</i> |
| Set baud rate | 99=... | Network comms speed is set | 2400, 4800 , 9600, 19200, 38400, 57600, 76800 <i>Example: 99=4800</i> After changing comm. speed it will be necessary to reconnect with HyperTerminal at the new comm. speed to save (write) the change! |
| Zero the Reset counters | 95=0, 96=0, 97=0 | Each Reset counter is zeroed | <i>Factory diagnostics</i> Resets = <95> <96> <97> <i>Rx timeout, Tx timeout, Hardware reset</i> |
| Application Number Setting | AN=0...99999 | Default Appl. # 162 is changed to user requirement | <i>The application number may need to be customised for older field panels which only accept a fixed selection of application numbers</i> |
| Write values as default | W | Changes written. | Always do this after making changes that you wish to be permanent |
| Exit communication | X | Communication with HyperTerminal no longer active | <i>Auto X after 240sec without key entry. After eXit unplug the HPECOM cable to allow network communication to take place</i> |

Display Navigation

| Function | Enter | Result | Options / Comments |
|----------|-------|---------------------------------------|--|
| | M | Display I/O summary screen | M |
| | P | Display Point status list | Enter P or P1 to display the first 21 Points. Enter Pxx (where 'xx' is a point #) to display any other point and the following 20 points |
| | S | Return to User Summary display | S |
| | SS | Screen Static | Disable 10 sec live update |
| | SL | Screen Live | Enable 10 sec live update |
| | SLLD | Screen Line Logic Display | Enable/Disable display of point numbers and screen line numbers in the summary display |



Summary Screen Setting

| Function | Line | Method | Result | Options / Comments |
|---|-----------|---------------|--|-----------------------------------|
| Summary Display Lines & dynamic point setting | SL1...32 | SL(x)x=abc... | Assign Screen Line text as information or in relation to SP1...32 | Alpha/numeric, 40 characters max. |
| | SP1...32 | SP(x)x=nnn | Assign Screen Point dynamic point value | Point # |
| | SLL1...32 | SLL(x)x=nnn | Assign Screen Line Logic point who's value >0 will cause the related screen line to appear at the top of the display (alarm state for instance) | Point # |

Manual Override / Release

Values that have been manually set will be indicted in HyperTerminal by an **M** tag next to the displayed value.

Manualled physical inputs (points 1...8 & 17...24) will revert to 'Auto' after being Released or after a power reset. Physical outputs will retain the Manual setting after a power reset if the Manual state is Written (**W**) before being released, thereby making the Manual state the power-up default state. If the 'Remember' function is enabled for an output the last commanded state is valid after a power reset.

| Function | Enter | Result | Options / Comments |
|---|------------------------------|--|--|
| Manual a Digital | Point #=1, 0 | Digital on or off | 1=On 0=Off <i>Example: 37=1</i> |
| Manual an Analogue | Point #=0...n | 0...100% block output | Block range 0....max <i>Example: 25=50 (AO1 50% output / 5Vdc output)</i> |
| Release Manual overrides back to 'Auto' * | R R=1...92 | Inputs will return to auto state/value. Other points will remain at manualled state/value until power reset or commanded | <i>Example 1: R All overrides are cleared</i> <i>Example 2: R=9 DOI (point 9) only return to Auto</i> |
| Reset pulse accumulator | 100...800=6 1700...2400=6 | DI or UI with pulse accumulator config. (UI or DI setting 6) is reset to zero | <i>Example: 800=6</i> |



Operational Displays

User Summary Screen

After breaking in to terminal mode the user defined point summary screen appears. This screen may be programmed by the user to provide a dynamic listing of point values specific to the application running in the device. Below is the factory default summary screen.

```
Point Summary
DI 1                OFF  D
UI 1                92.0 Ctc
DO 1                OFF  D
AO 1                0.0  %

Data above as example
All lines configurable
```

By entering **SLLD** (Screen Line Logic Display) the text line numbers, the point numbers relating to the dynamic points assigned to each line and any SLL (Screen Line Logic) links are displayed.

```
1 Point Summary
2
3 DI 1                1  OFF  D
4 UI 1                17 92.0 Ctc
5 DO 1                9  OFF  D
6 AO 1                25 0.0  %
7
8 Data above as example
9
10 All lines configurable
11
12 POINT 1 HIGH DISPLAYS ME AT THE TOP  SLL 1  OFF  D
13
14
15
16
17
18
19
20
21
22
23
24
```

On line 12 you can see a text entry that will not be seen when SLLD is off but will appear at the top of the screen when the point set for SLL12 is high, in this case point 1 (Digital Input 1). Enter SLLD again to revert to normal display mode. Below is the appearance of this hidden line when SLLD is off and DI1 is high.

```
POINT 1 HIGH DISPLAYS ME AT THE TOP
Point Summary
DI 1                ON  M  D
UI 1                92.0 Ctc
DO 1                OFF  D
AO 1                0.0  %

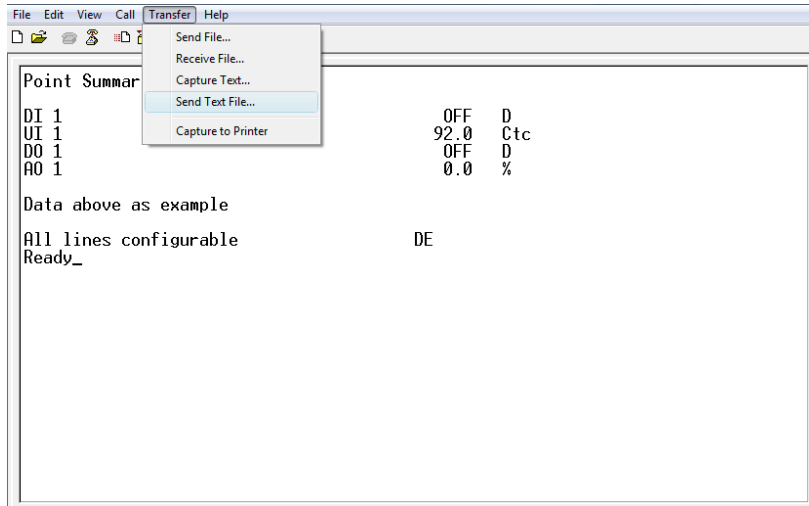
Data above as example
All lines configurable
```

You may use SLL settings for alarm or warning text that will only appear when the assigned point has a value >0.

Download Text File

Enter DE (Download Eprom) and you will see 'Ready' bottom-left of the screen. Now go to the Transfer menu item in HyperTerminal, select Send Text File, then open the path to the text file, created in the FuncProg tool, which you want to download.

The 'Ready' state is active for 20 seconds. If the text file location on your PC has a long path to find it the 'Ready' state may time out. It is recommend that you save the application text files in a folder on your PC Desktop to locate them in a time efficient manner.



After the text file has downloaded you will briefly see a check of the number of lines expected versus the number of lines received. If the two values are equal 'Restarting...' will be displayed at which point the new configuration is written to non-volatile memory automatically.

Below is an example showing a selection of utilised points included in the summary screen with user point descriptions for easy identification of each point's use

| | | | | |
|----|-------------------|----|------|----|
| 1 | | | | |
| 2 | | | | |
| 3 | Room temperature | 17 | 19.5 | C |
| 4 | | | | |
| 5 | Room humidity | 18 | 59.1 | rH |
| 6 | | | | |
| 7 | | | | |
| 8 | Heating stage 1 | 9 | ON | |
| 9 | Heating stage 2 | 10 | ON | |
| 10 | Heating stage 3 | 11 | OFF | |
| 11 | Heating stage 4 | 12 | OFF | |
| 12 | | | | |
| 13 | DX stage 1 | 13 | ON | |
| 14 | DX stage 2 | 14 | ON | |
| 15 | DX stage 3 | 15 | ON | |
| 16 | DX stage 4 | 16 | ON | |
| 17 | | | | |
| 18 | Fan proving | 2 | ON | |
| 19 | Compressor enable | 3 | ON | |
| 20 | | | | |
| 21 | Local start/stop | 1 | ON | |
| 22 | | | | |
| 23 | | | | |
| 24 | | | | |

- Column 1 = Screen Line number (enter SLLD to toggle this column display on or off)
- Column 2 = User point description or general information text
- Column 3 = Point number of the displayed dynamic value (enter SLLD to toggle on or off)
- Column 4 = The dynamic point value
- Column 5 = Units related to the dynamic point value (as configured in the linearization table)



Main' Physical I/O Display

By entering **M** (Main) we can view the physical I/O summary status in the next illustration. In this example points 9 & 10 (DO1 & DO2) have Max. Run time of 1000 seconds set to reduce wear & tear of the 3-point actuator when open or closed command is at 100%; after 1000 seconds the output will electrically be switched off (logically still seen as ON) until the command value falls below 100% at which time the Max Run timer will reset. In practice it is recommended to set the Max Run timer at 2 x the actuator running time.

```

HPC8884P1V4.01App162 Rm/SA Cascade
Resets = 0 0 3 98) 98 99) 4800
17)UI1 = 21.0 Ctc 991      DI1 = OFF D
18)UI2 = 15.0 Ctc 991      DI2 = OFF D
19)UI3 = -10.0 Ctc 990     DI3 = OFF D
20)UI4 = -10.0 Ctc 991     DI4 = OFF D
21)UI5 = -10.0 Ctc 991     DI5 = OFF D
22)UI6 = -10.0 Ctc 990     DI6 = OFF D
23)UI7 = -10.0 Ctc 991     DI7 = OFF D
24)UI8 = -10.0 Ctc 990     DI8 = OFF D
25)A01 = 0.0 %             9)D01 = 0.0 % 0 0 0 01000
26)A02 = 0.0 %            10)D02 = 0.0 % 0 0 0 01000
27)A03 = 0.0 %            11)D03 = 0.0 % 0 0 0 0 0
28)A04 = 0.0 %            12)D04 = OFF D 0 10 10 0 0
                             13)D05 = OFF D 0 10 10 0 0
                             14)D06 = OFF D 0 10 10 0 0
                             15)D07 = OFF D 0 10 10 0 0
                             16)D08 = OFF D 0 10 10 0 0

Pt No = Value
X to exit
W to write values
  
```

Annotations in the image:

- Green arrow pointing to '01000' in row 9: Min. ON time
- Green arrow pointing to '01000' in row 10: Min. ON time
- Green arrow pointing to '0 0 0' in row 11: Min. OFF time
- Green arrow pointing to '0 10 10' in row 12: Time elapsed
- Green arrow pointing to '0 10 10' in row 13: Time elapsed
- Green arrow pointing to '0 10 10' in row 14: Time elapsed
- Green arrow pointing to '0 10 10' in row 15: Time elapsed
- Green arrow pointing to '0 10 10' in row 16: Time elapsed
- Pink arrow pointing to '01000' in row 9: Time elapsed
- Pink arrow pointing to '01000' in row 10: Time elapsed
- Pink arrow pointing to '01000' in row 10: Max. Run time

UI's display the linearized & scaled value (including calibration offset if any), the units as set in the linearization table and, to the right of the units, the 'raw count' as seen by the microprocessor prior to linearization and scaling being applied.

Point List Display

Enter **P** to display the first 21 active points. The listing will include any active logic connections and, in the case of the UI's the present calibration offset if used.

```

HPC8884P1V4.01App162 Rm/SA Cascade
1 DI1 = OFF D
2 DI2 = OFF D
3 DI3 = OFF D
4 DI4 = OFF D
5 DI5 = OFF D
6 DI6 = OFF D
7 DI7 = OFF D
8 DI8 = OFF D
9 D01 = 0.0 %
10 D02 = 0.0 %
11 D03 = 0.0 %
12 D04 = OFF D
13 D05 = OFF D
14 D06 = OFF D
15 D07 = OFF D
16 D08 = OFF D
17 UI1 = 21.0 Ctc { 0.5 }
18 UI2 = 15.0 Ctc
19 UI3 = -10.0 Ctc
20 UI4 = -10.0 Ctc
21 UI5 = -10.0 Ctc
  
```



Enter P22 or any other starting point # to display another set of 21 device relevant sequential points.

```
HPC8884BNV4.01
22 UI6 = -10.0 Ctc
23 UI7 = -10.0 Ctc
24 UI8 = -10.0 Ctc
25 A01 = 0.0 %
26 A02 = 0.0 %
27 A03 = 0.0 %
28 A04 = 0.0 %
```

Reset to Factory Default

If using a device that has previously been programmed it is recommended to reset the device to Factory Default before reprogramming to ensure any old settings that are unwanted in the new program do not have any influence on the new application.

To perform a Factory Default reset enter **FD=1**

A device set at Factory Default settings will have 'FD' displayed in the top line of the Main physical point summary screen [M]).

Note: If using devices with firmware less than version 4.00 then you must download the Factory Default text file to reset the device to Factory Default.

Upload Text File

In event that application files are lost it is possible to retrieve an application settings Text File from a device using the UE (Upload Eeprom) command.

After entering UE the current settings in the device will be printed on to the terminal screen. With HyperTerminal it is possible to Capture this upload:

- 1) Start a Capture Text from the Transfer menu of HyperTerminal
- 2) Enter UE
- 3) After the print of all settings has completed then stop the Capture
- 4) Locate the text file which was created during the Capture process
- 5) Clean up the file by deleting any lines that are not relevant setting lines
- 6) Count the number of lines (paste in to Excel cell A1 is a fast way to check the line count)
- 7) Add one more line at the bottom of the file with content 10000=nnn
 - a. nnn value is the number of lines previously counted + 1
 - b. Ensure there is one line return after the 10000=nnn line

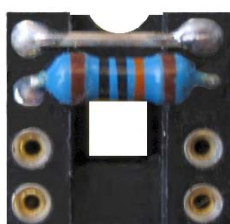
This text file is now ready for saving as a backup or for Down Load to other devices.

Other terminal programs may have other processes for saving the uploaded text. In some cases it may simply be a case of copying the relevant lines of the screen and pasting in to Notepad. Whatever the process, the 10000=nnn line must be added if the file is to be used for Down Load in future.

Universal Inputs

UI's feature input resistor raft (hardware) and linearization table curves (software) for definition of a wide range of sensor types so is useful for retrofit activities allowing existing sensors to be reused. The linearization tables in the device may be customised and UI raft resistor values altered to suit other sensors as required.

Ready-made UI rafts to suit factory default linearization table selections are available. The factory default UI raft is fitted with 0Ω (short-circuit) in position 1 and 100kΩ in position 2; configuration as Digital/pulse Input or 100kΩ -10...90°C NTC thermistor temperature sensor. Assignment of the input as DI, pulse counter or NTC thermistor is made by setting the relevant linearization table 'Sensor Type' for the input.



1. Gain Resistor
2. Biasing Resistor
- 3 Voltage Divider
4. Dropping Resistor

UI raft configurations are made according to the table below and by PC assignment of the relevant Sensor Type. **Factory default Sensor Type selections are highlighted. Factory default input raft configuration is in bold text.**

When making own raft configurations select ¼ Watt resistors of 1% tolerance or better.

| Input Type | Sensor | Range | Unit | Slope | Intercept | Type | UI Resistance Raft (Ω) | | | |
|-----------------|-----------------|-----------------|-----------|----------|------------|---------------|------------------------|-------------|-------------|-------------|
| | | | | | | | 1 | 2 | 3 | 4 |
| DI | | On/Off | | 1 | 0 | BV | 0 | 100k | Open | Open |
| Counting | | 0-65536 | 1 | 1 | 0 | AV | 0 | 100k | Open | Open |
| AI | 0-5Vdc | 0-100 | % | 1 | 0 | AI, AV | 0 | Open | Open | 4k7* |
| AI | 0-10Vdc | 0-100 | % | 1 | 0 | AI, AV | 0 | Open | 100k | 4k7* |
| AI | 0-20Vdc | 0-100 | % | 1 | 0 | AI, AV | 0 | Open | 33k | 4k7* |
| AI | 4...20mA | 0-100 | % | 1 | 0 | AI, AV | 0 | Open | Open | 250 |
| AI | 100k NTC | -10...90 | °C | 1 | -10 | AI, AV | 0 | 100k | Open | Open |
| AI | 20k NTC | -10...90 | °C | 1 | -10 | AI, AV | 0 | 20k | Open | Open |
| AI | 10k NTC | -10...90 | °C | 1 | -10 | AI, AV | 0 | 10k | Open | Open |
| AI | 8k NTC | -10...90 | °C | 1 | -10 | AI, AV | 0 | 8k | Open | Open |
| AI | 3k NTC | -10...90 | °C | 1 | -10 | AI, AV | 0 | 3k | Open | Open |
| AI | PT1000 | -10...90 | °C | 1 | -10 | AI, AV | 820k | 1.1k | Open | Open |
| AI | Ni-1000 | -10...90 | °C | 1 | -10 | AI, AV | 360k | 1.2k | Open | Open |
| AI | Ni-1000 | -50...50 | °C | 1 | -50 | AI, AV | 360k | 1k | Open | Open |
| AI | Ni-1000 | 50...150 | °C | 1 | 50 | AI, AV | 360k | 1.5k | Open | Open |

* Measurement with some lower impedance voltage-based sensors may top out before the full voltage range is reached, requiring omission of the 4k7 resistor.

Linearisation Table

The Linearisation Table provides conversion of the UI physical signal in to an engineering value for display and control in other areas of an application. Sensor Types 0...5 may be customised to suit different scaling for a specific active sensor type or to suit a passive sensor element that is not already pre-programmed as a factory default.

Factory Default Sensor Types

| UI Sensor Type | Sensor | Units Tag | Scale |
|----------------|-------------------|-----------|-------------|
| 0 | 100k NTC | Ctc | -10...90 °C |
| 1 | Nickel 1000 (PTC) | Cni | -10...90 °C |
| 2 | 0-10Vdc | %V1 | 0...100% |
| 3 | 4...20mA | %mA | 0...100% |
| 4 | PT1000 (PTC) | Cpt | -10...90 °C |
| 5 | 10k NTC | Ctx | -10...90 °C |

Enter <L> to display the default linearization table.

| | | | | | | | | |
|----|------|------|------|------|------|------|------|------------------------|
| 1 | | C | C | % | % | C | C | Units character1 |
| 2 | | t | n | V | m | p | t | Units character2 |
| 3 | | c | i | 1 | A | t | x | Units character3 |
| 4 | 0 | 852 | 243 | 0 | 200 | 173 | 819 | |
| 5 | 150 | 723 | 319 | 150 | 320 | 306 | 695 | |
| 6 | 300 | 554 | 393 | 300 | 440 | 436 | 546 | |
| 7 | 450 | 385 | 465 | 450 | 560 | 555 | 399 | |
| 8 | 600 | 249 | 535 | 600 | 680 | 669 | 277 | |
| 9 | 750 | 154 | 604 | 750 | 800 | 777 | 188 | |
| 10 | 900 | 95 | 671 | 900 | 920 | 879 | 124 | |
| 11 | 1024 | 59 | 723 | 1007 | 1007 | 950 | 89 | |
| 12 | | -100 | -100 | 0 | 0 | -100 | -100 | Intercept |
| 13 | | -1 | -1 | -1 | -1 | -1 | -1 | Decimal shift (-2...2) |
| 14 | | 1 | 1 | 1 | 1 | 1 | 1 | Multiplier (1...9) |

Column 1 (Reference)
 Column 2 (UI Sensor Type 0)
 Column 3
 Column 4
 Column 5
 Column 6
 Column 7 (UI Sensor Type 5)

Active Sensor Scalings

Column 1 is the fixed reference to which all display results are based. The range of the reference column 1 is effectively 0...1000.

It is important to interpret the reference values in combination with the intercept and scaling data at rows 12...14. Taking Sensor Type 2, 0-10Vdc, as an example:

- The microprocessor raw count range of 0...1000 relating to 0-10Vdc results in 0...100% display because the reference column values are being decimal shifted one place to the left (row 13 column 4 = -1)
- If 0-10Vdc is to be displayed directly as 0-10Vdc then we need to decimal shift -2 at row 13 column 4 and change Units display characters
 - 134=-2
 - 14=V (row 1 column 4)
 - 24=d (row 2 column 4)
 - 34=c (row 3 column 4)



- If 0-10Vdc is to be displayed as 0...50°C then decimal shift the display reference range -2 at row 13 column 4, multiply it by 5 at row 14 column 4 and change units characters (remove surplus characters by entering a <space>)
134=-2
144=5
14=C (row 1 column 4)
24=<space> (row 2 column 4)
34=<space> (row 3 column 4)
- If a second 0-10Vdc sensor with different scaling is needed, say, 0...2000 PPM, then copy default 0-10Vdc raw count data to a column who's existing sensor data will not be used in future. The following settings assume overwrite of the Ni1000 column 3 (Sensor Type 1)
13=P
23=P
33=M
43=0
53=150
63=300
73=450
83=600
93=750
103=900
113=1007
123=0
133=0
143=2

In the last example the display reference column range is unchanged, 0...1000, until the multiplier at row 14 is applied (x2) resulting in a final scale for PPM of 0...2000.

Note: The value at the intercept row, 12, will have the decimal shift (row 13) and multiplier (row 14) applied to it. Therefore, if intercept -10.0 is required and decimal shift will be -1 (x0.1) then enter -100 in row 12 as the final result after processing with the decimal shift will be an intercept of -10.0

Using the FUNCPRG tool these settings can be generated in table form for saving as a download text file.

Passive Sensor Definition

Non factory default passive sensors with thermistor element of 1kΩ or greater may be configured

1. Set up a UI raft with suitable resistance links fitted and plug it in to the raft socket of the UI being used. If the sensor was 8kΩ at 25°C then 8kΩ would be fitted in link 2 of the UI raft
2. Consult the manufacturers resistance chart for the sensor being used and connect resistance equivalent to the reference values in Column 1 (note that in the reference column 1 the reference value 150 is considered as 15°C once the decimal shift of -1 is applied at row 13)
3. Assign an otherwise unused Sensor Type to the test UI
4. In the Main I/O display read and record the raw count value, as displayed to the right of the units for the UI to which the test resistance is connected
5. Enter the raw count in the table at the corresponding reference value row and column;
<row#><column#>=<raw count>
6. Complete the raw count entry for all reference points
7. If an intercept other than zero (0) is applied then raw count measurements must be at reference values shifted an equivalent amount

Reset to Factory Default

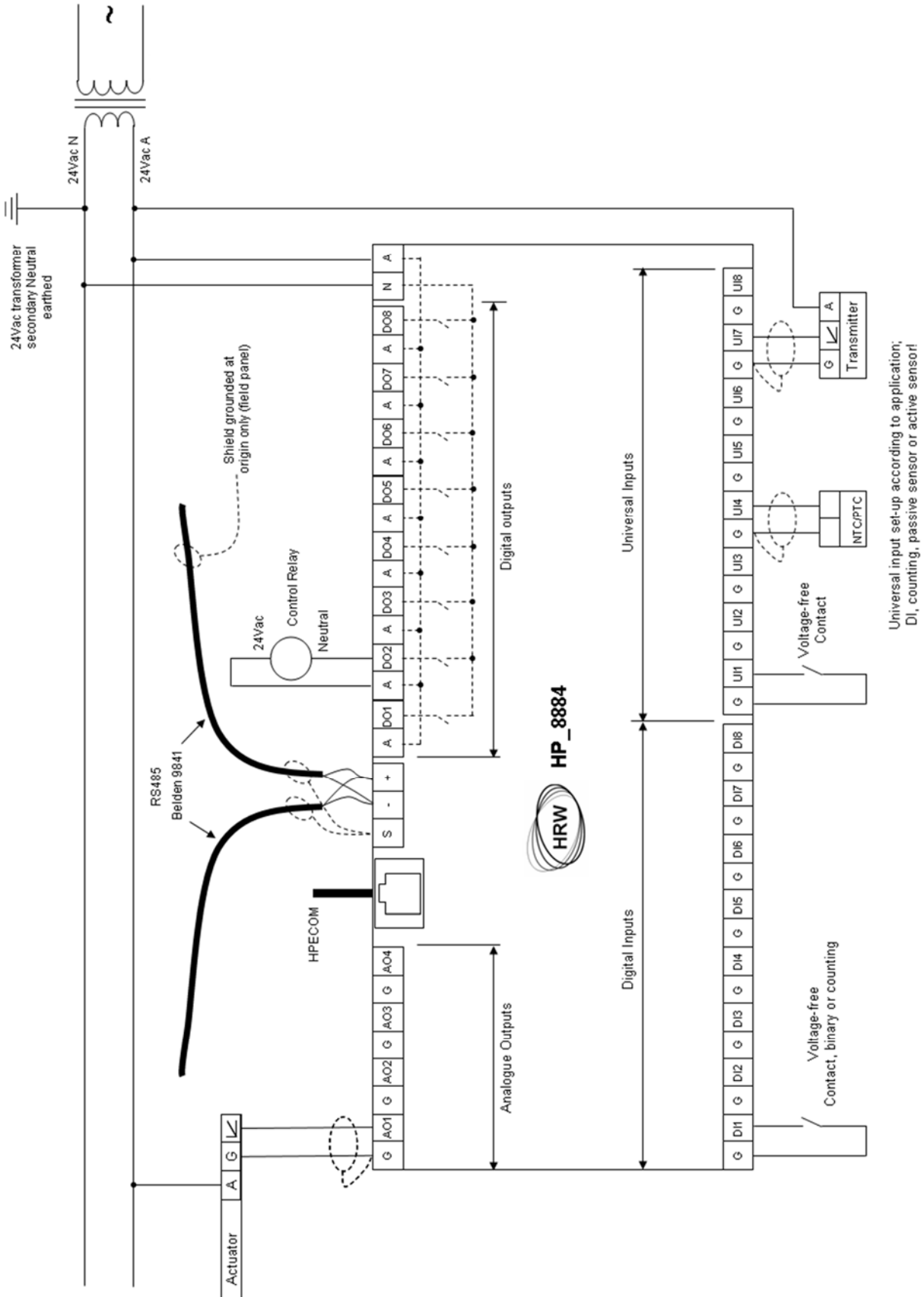
The **FD=1** reset command also resets changes to the linearization tables



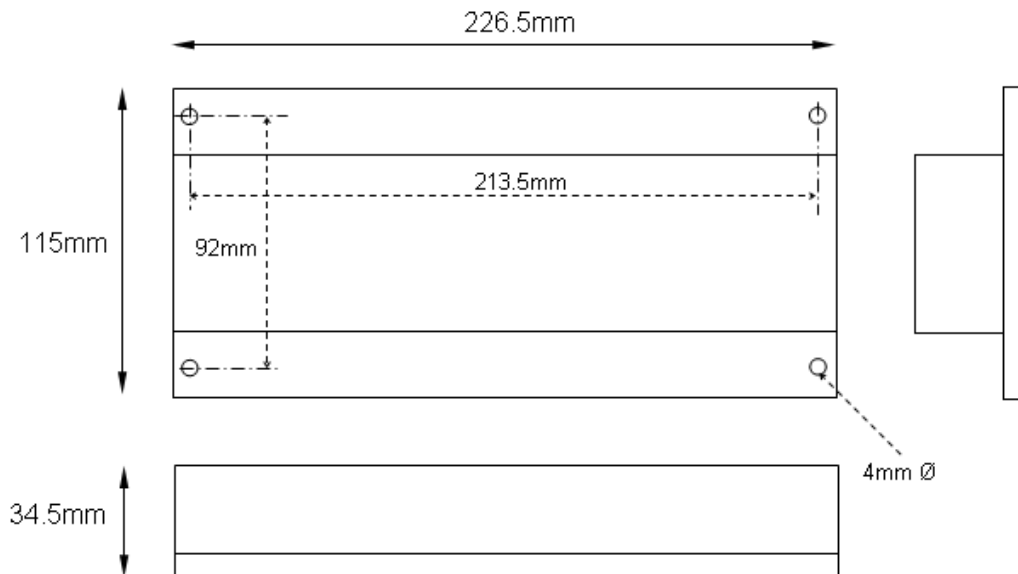
Installation & Commissioning

- This is an RS485 network device designed for indoor use, mounted in a dry electrical panel. Ideally it should be mounted to the panel backplane in a horizontal position (inputs on the lower side and outputs on the upper side)
- Each 24Vac power supply transformer must have the neutral (24Vac N) connection grounded at the electrical panel earth connection to ensure the device grounding is at the same potential as the network master's grounding
- Where more than one device is connected to a common transformer ensure that the 24Vac phasing is the same to each device ('A' connects to 'A', 'N' connects to 'N' in all cases)
- If the red comms light adjacent to the RS485 terminals emits an obvious flash every time 24Vac power is applied to the device then the micro-processor may be corrupted. The microprocessor should be replaced
- Twisted pair shielded cable must be used for the sensors and transmitters connected to the universal inputs (UI's). The sensor cable shield must be grounded, at the device end only
- RS485 multi-drop cable should be used for the network connections, complete with end of line terminating resistors (120Ω). Belden 9841 or equivalent is recommended. The recommended cable is a low capacitance twisted pair with braid and foil screen
- The RS485 cables should be terminated directly at each device in a daisy-chain configuration, avoiding 'laterals' or 'spurs'
- The RS485 screen should be connected at the network master's ground terminal. The incoming and outgoing screen at each device should be continuously connected via the S terminal of the device (note that the device's S terminal has no electrical connection to the device, it merely acts as a junction terminal for the purpose of screen continuity)
- The RS485 cable should avoid cable routes that run with power cables. Where the RS485 cable must cross power cables then they should cross at 90° avoiding parallel runs beside power cables
- Prior to connection of the slave devices to the RS485 network check that no AC voltage is present. Double check the network for short circuits between the twisted pair cores and between the cores and the screen. Ensure continuity of the twisted pair cores and the screen
- Check the network master's +/- terminals for correct voltages to ground (approx. 2.5Vdc) and connect the RS485 network cable to the network master's RS485 port
- At each device assign an individual address and the baud rate specific to the network. Write the changes, eXit the terminal application and remove the HPECOM cable
- Verify network voltage at the RS485 connector (between +/- and ground) and connect to the device. Communication can be verified by flashing of the red comms LED adjacent the 3 terminal RS485 connector). Frequency of comms LED flash is baud rate dependant. At higher baud rates the LED flash may not be obvious, the LED appearing to be continuously on
- Where a network runs between buildings and zero earth potential difference between individual panel 24Vac power supplies cannot be guaranteed, we recommend that a repeater be used to provide isolation of the sections of the network having differing earth potential

Connections



Dimensions



If using HDA0002 DIN rail adapter brackets the overall depth from the gear plate to the front surface of the device is 45.5mm

Technical Data

Inputs/Outputs

- 8 DI - Voltage-free contact closure, 1mA
- Binary DI or pulse counting up to 10Hz (pulse value saved hourly)
- 8 DO - 24Vac, 3A in-rush, 300mA holding max., minimum load 10mA
- 8 UI - DI with pulse counting up to 10 Hz (pulse value saved hourly)
- NTC/PTC (min. 1k Ω)
- 0-5Vdc, 0-10Vdc, 0-20Vdc, 0.01 Volt resolution
- 0...20Ma, 4...20mA, 0.016mA resolution (requires external 18...28Vdc loop power supply)
- 4 AO - 0-10Vdc, 0.04 Volt resolution, 1.5mA (min 6.6k Ω impedance)

Sensor/Transmitter Wiring Network Wiring

Shielded twisted pair (shield grounded)
Belden 9841 low capacitance twisted pair for RS485 networks (braided + foil shield, shield continuous throughout the network and grounded at network origin)

Comms Speed RS485 Driver Power Supply

RS485 - 2400, 4800, 9600, 19200, 38400, 57600, 76800 baud
Isolated 1/8th load, 256 nodes over max. 1.2km without repeater
24Vac, 50/60 Hz, max. 5VA without DO load
60VA MAX. when DO's supplied via the device's 24Vac terminals and fully loaded @ max. 300mA / DO

Conformity

UL 916
CAN/CSA C22.2 #205-M1983
FCC Part 15 Subpart B Class B
EN 55022, EN 55024, EN 61000-3-2, EN 61000-3-3

Operating Temperature Range

0...50°C (32...122°F)

Storage Temperature Range

-5...75°C (-40...167°F)

Humidity Range

10...95%rH (non-condensing)

Dimensions

115mm H x 226.5mm L x 34.5mm D



Ordering Information

HPE8884P1

Description: I/O Expansion unit, 28 Point, P1 FLN, 24Vac
Standard package: 20 units per carton

Any mix of the following UI configuration rafts are available for free of charge pre-assembly at the time of ordering the controller. If required after controller delivery they may be purchased in packs of 50 pieces of one type (other types by request):

| | |
|-------------------|---|
| HPE-RA010 | HP_8884 UI raft, Active 0(2)-10Vdc |
| HPE-RA420 | HP_8884 UI raft, Active (0)4...20mA |
| HPE-RC1090 | HP_8884 UI raft, Passive 100k NTC -10...90°C / Digital |
| HPE-RN1090 | HP_8884 UI raft, Passive Ni1000 -10...90°C |
| HPE-RP1090 | HP_8884 UI raft, Passive PT1000 -10...90°C |
| HPE-RS1090 | HP_8884 UI raft, Passive 20k NTC -10...90°C / Digital |
| HPE-RX1090 | HP_8884 UI raft, Passive 10k NTC -10...90°C / Digital (factory default) |

Accessories

| | |
|-----------------|---|
| HDA0002 | DIN rail adapter brackets, factory fitted |
| HSD0011 | 10k NTC Room temperature sensor, c/w discrete occupancy button (press sensor face), RJ11 connected to UI1 & UI2 |
| HSD0012 | 10k NTC Room temperature sensor, c/w set point dial and discrete occupancy button (press set point dial), RJ11 connected to UI1 & UI2 |
| HPR6 | Relays module, 6 x Opto-iso SPDT 250Vac 10(7)A n/o 6A n/c, ac/dc trigger, Auto/Off/Manual switch, 24Vac |
| FUNCPROG | Application creation tool |
| HPECOMU | Configuration cable (USB <> RJ11) |

Other HP_P1 Series Devices

| | |
|-----------------------|---|
| HPC0662P1 | Universal Controller, 12 Point, P1 FLN, 24Vac |
| HPD0460P1 | Network HMI, 12 Point, P1 FLN, 24Vac |
| HPD0460P1C | Network HMI / Universal Controller, 10 Point, P1 FLN, 24Vac |
| HPD0460P1CT | Network HMI / Universal Ctrl / Scheduler, 10 Point, P1 FLN, 24Vac |
| HPD0460P1T | Network HMI / Scheduler, 10 Point, P1 FLN, 24Vac |
| HPE8884P1 | I/O expansion, 28 Point, P1 FLN, 24Vac |
| HPV0662P1 | VAV / Universal Controller, 13 Point, P1 FLN, 24Vac |
| HPE-P1MBUS | P1 FLN gateway for M-Bus devices, 96 point, 24Vac |
| HPE-P1MBUS-195 | P1 FLN gateway for M-Bus devices, 195 point, 24Vac |
| HPE-P1MOD2 | P1 FLN gateway for Modbus devices, 96 point, 24Vac |
| HPE-P1MOD2-195 | P1 FLN gateway for Modbus devices, 195 point, 24Vac |



UI Configuration Request Form

Date: _____

Contact Name: _____

Phone: _____

Fax: _____

Email: _____

Company Name: _____

Address: _____

HPE8884P1 Quantity: _____

Universal Input Configuration: Indicate an input configuration type for each UI

| | UI1 | UI2 | UI3 | UI4 | UI5 | UI6 | UI7 | UI8 |
|----------------|-----|-----|-----|-----|-----|-----|-----|-----|
| 0-10Vdc | | | | | | | | |
| 4...20mA | | | | | | | | |
| 10k NTC / Dig | | | | | | | | |
| 20k NTC / Dig | | | | | | | | |
| 100k NTC / Dig | | | | | | | | |
| Nickel 1000 | | | | | | | | |
| PT1000 | | | | | | | | |

Other: Passive types must be 1kΩ or higher

| | | | | | | | | |
|--|--|--|--|--|--|--|--|--|
| | | | | | | | | |
| | | | | | | | | |
| | | | | | | | | |

Comments:



Document Update History

| | |
|---------------------|--|
| V4.02 150622 | HRW address updated |
| V4.02 141030 | Upload application text-file, download network settings in text-file, isolated RS485 |